

# The Wheel of Time

## A Critical Analysis of Book-to-Screen Adaptation Choices



### I. Introduction

Robert Jordan's "The Wheel of Time" series has long been a cornerstone of epic fantasy literature, captivating readers with its intricate world-building, complex characters, and sweeping narrative. The recent television adaptation by Amazon Prime Video brings this beloved series to a new medium and a wider audience. However, as with many book-to-screen adaptations, significant changes have been made in the transition from page to screen.

This essay aims to explore and analyze the key differences between the book series and its television counterpart, focusing on how these adaptational choices impact the story's depth, character development, and overall narrative structure. While the show undoubtedly introduces Jordan's rich world to a broader audience, it also makes substantial alterations that risk simplifying the complex tapestry of the original work.

By examining elements such as world-building, character arcs, and pivotal plot points, we will assess how the television series both succeeds and falls short in capturing the essence of Jordan's epic. This analysis will demonstrate that while the TV adaptation of "The Wheel of Time" brings the story to life visually, its simplification of key elements and character arcs risks diminishing the depth and complexity that made the books so compelling to millions of readers worldwide.

## II. Broad Overview of Adaptation Choices

### A. Condensing the narrative:

1. The show compresses 14 lengthy novels into a more compact television series.
2. This results in a significantly accelerated pace, with events unfolding much more quickly than in the books.
3. While this makes the story more accessible, it risks losing nuanced world-building and character development.
4. Example: The journey from Emond's Field to Tar Valon, which spans multiple books, is condensed into a few episodes.

### B. Character age changes:

1. Main characters are aged up from teenagers to young adults.
2. This affects the coming-of-age aspect of the story and changes character dynamics.
3. Example: Rand and Egwene's relationship is portrayed as more mature and established compared to their youthful romance in the books.

### C. Diversity in casting:

1. The show embraces a more diverse cast than explicitly described in the books.
2. This choice reflects contemporary values but alters some cultural dynamics present in Jordan's world.
3. Example: Egwene, described in the books as having dark eyes and hair with fair skin, is portrayed by Madeleine Madden, an actress of Indigenous Australian descent.
4. This change affects the homogeneity of the Two Rivers and how characters are perceived in the wider world of the show.

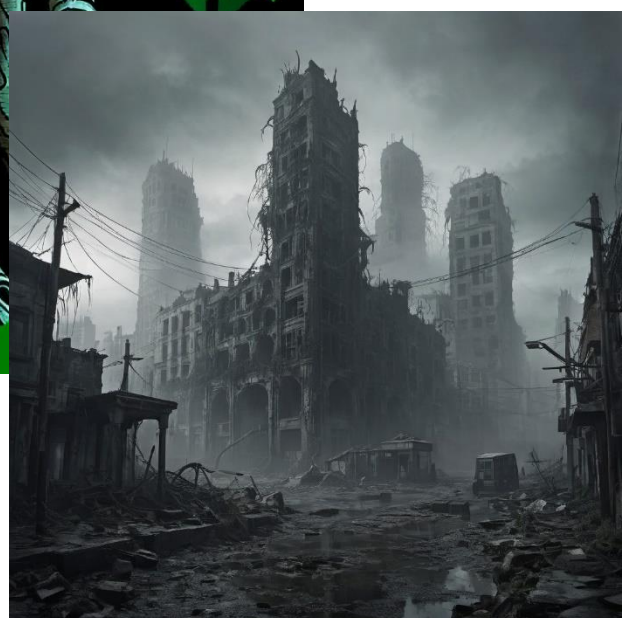
### D. Visual representation of magic:

1. The One Power is given a visual manifestation in the show, unlike the more abstract descriptions in the books.
2. In the books, Saidin (male half) and Saidar (female half) are distinct:
  - Saidin is described as a raging torrent that must be controlled, tainted by the Dark One's touch.
  - Saidar is often portrayed as a river that must be embraced and guided.
3. The show simplifies this, representing all channeling similarly with glowing white threads.
4. Book examples:
  - "Rand reached out for saidin, tried to pull it in. The taint slid off of his attempts like water off glass." (The Great Hunt)
  - "Embracing saidar was like opening herself to a river of pure joy." (The Dragon Reborn)
5. This visual representation helps viewers understand channeling but loses some of the nuanced differences between male and female channeling.

### E. Tonal shifts:

1. The show adopts a darker, more mature tone from the outset.
2. In contrast, the books begin with a more traditional fantasy feel before gradually growing darker.
3. While aiming for a darker tone, the show sometimes falls short in capturing the books' moments of genuine horror and thriller-like tension.
4. Examples from the books that showcase darker tones:
  - The horror of Shadar Logoth and Mashadar
  - The psychological terror of dreams invaded by Ba'alzamon
  - The creeping dread of the Myrddraal's presence
5. The show's attempts at darkness sometimes feel more superficial, lacking the deep-seated horror present in certain book scenes.

These adaptation choices reflect the challenges of translating a complex fantasy series to television. While they make the story more immediately accessible and visually engaging, they also result in significant departures from the source material, altering key aspects of the world, characters, and overall tone of "The Wheel of Time."



### III. Simplification of World-Building Elements

One of the most notable changes in the adaptation is the simplification of the rich and complex world that Robert Jordan created. This is particularly evident in the treatment of certain races, locations, and magical concepts.

#### A. Ogier and their culture

1. The show significantly downplays the role and nature of the Ogier. Loial, the main Ogier character introduced, appears briefly without much explanation of his people's unique characteristics or culture.
2. The concept of the Longing, a crucial aspect of Ogier psychology in the books, is entirely absent from the first season. This omission removes a significant part of Ogier motivation and their connection to their homeland.
3. Ogier groves, central to their culture and history in the books, are not explored in the show. This simplification reduces the depth of the world's history and the Ogier's place within it.

#### B. Stedding and Waygates

1. The show features Waygates but doesn't explain their connection to Stedding, the Ogier homelands.
2. Stedding themselves - areas safe from the taint on saidin and where humans can't channel - are not mentioned at all in the first season.
3. This omission simplifies the world's magical system but loses some of its nuance and complexity.

#### C. Implications of these omissions

1. The simplification of these elements reduces the richness and depth of the world that made the books so immersive for many readers.
2. It changes the audience's perception of the world's complexity and history.
3. The lack of detail about non-human races like the Ogier alters the understanding of the world's diversity.
4. These omissions may impact future storylines that rely on these elements, potentially requiring significant deviations from the source material.

This simplification of world-building elements, while making the story more accessible to new audiences, risks losing some of the unique aspects that set "The Wheel of Time" apart in the fantasy genre. The show's approach favors immediate comprehension over the gradual unveiling of the world's complexities that the books offer.

## IV. The Green Man and the Eye of the World

The treatment of The Green Man and the Eye of the World in the television adaptation represents one of the most significant departures from the source material, fundamentally altering a pivotal moment in the story.

### A. Absence of the Green Man in the show

1. In the books, the Green Man is a mystical figure guarding the Eye of the World, tied to nature and the ancient past.
2. The show completely omits this character, removing a significant piece of the world's mythology and history.
3. This omission alters the climactic encounter at the end of the first book/season, changing both the tone and the nature of the protagonists' quest.

### B. Changed portrayal of the Eye of the World

1. In the books, the Eye is a pool of pure, untainted saidin (male half of the One Power), created by male and female Aes Sedai working together after the Breaking of the World.
2. The show portrays the Eye differently, more as a pool of generic One Power rather than specifically saidin.
3. This change simplifies the magic system, potentially impacting future plot points related to the taint on saidin and the separation of male and female channeling.

### C. Impact on world mythology and history

1. The Green Man's absence removes a direct link to the Age of Legends and the world's past, reducing the sense of deep history present in the books.
2. The altered nature of the Eye of the World changes its significance in the world's magical history and its role in the prophecies about the Dragon Reborn.
3. These changes may necessitate further alterations to the overarching plot and the way the world's history unfolds in future seasons.

### D. Narrative and thematic implications

1. The original encounter with the Green Man and the Eye served as a mystical, almost dreamlike climax to the first book, contrasting with the more straightforward confrontation in the show.
2. The removal of these elements shifts the tone of the story's conclusion, moving away from the more traditional fantasy elements present in the early part of the book series.
3. These changes may alter how themes of cyclical history and the connection between past and present are explored in the series.

This significant alteration to a key location and event in the story exemplifies the show's approach to adaptation: streamlining complex mythological elements for a television audience, but in doing so, potentially sacrificing some of the depth and mystery that characterized Jordan's world-building. The long-term implications of these changes on the overall narrative arc remain to be seen as the series progresses.

## E. Season 2's further deviations

1. Egwene's role in the finale:
  - In the books, Rand is central to the climactic battles and revelations.
  - The show places Egwene in a pivotal role during the finale, significantly altering the power dynamics and prophesied events.
  - This change shifts focus from Rand as the primary chosen one, potentially diluting the impact of the Dragon Reborn prophecy.
2. Rand's diminished role:
  - The books firmly establish Rand as the central figure in the struggle against the Dark One.
  - The show's decision to sideline Rand in major confrontations represents a fundamental shift in the narrative structure.
  - This alteration may impact how Rand's character arc and the overall prophecy storyline unfold in future seasons.
3. Changes to magical confrontations:
  - The nature of the battles and use of the One Power in the Season 2 finale differ significantly from the books.
  - These changes may indicate a different approach to how channeling and magical confrontations will be portrayed going forward.

## F. Implications of increased deviations

1. Narrative structure:
  - The show is now charting a course that diverges substantially from the books' plot structure.
  - This may lead to entirely new storylines and character arcs not present in the original material.
2. Character development:
  - The altered roles of characters like Rand and Egwene may lead to different character growth trajectories.
  - Supporting characters may take on more significant roles than in the books, changing group dynamics.
3. Thematic shifts:
  - The focus on multiple powerful characters rather than a single chosen one may alter themes of destiny and individual responsibility.
  - The show may be moving towards a more ensemble-based narrative, differing from the books' focus on Rand's journey.
4. Fan expectations:
  - These significant changes may polarize the audience, particularly long-time fans of the books.
  - The show is now setting expectations for a substantially different story than what book readers might anticipate.
5. World-building implications:
  - Deviations in how major prophesied events unfold may necessitate reimagining large portions of the world's mythology and magic system.
  - This could lead to a domino effect, requiring changes to future plot points that were central to the books' narrative.

### G. Potential for new storytelling opportunities

1. The show's willingness to deviate significantly opens up possibilities for surprising both new viewers and book readers.
2. These changes may allow the show to address criticisms of the original material or update certain elements for a modern audience.
3. The divergence might enable the show to streamline some of the more complex or lengthy plot arcs from the later books.

These expanding deviations from the source material represent a bold choice by the show's creators. While they risk alienating some purists, they also offer the potential for a fresh take on the story that may resonate with a broader television audience. The success of these changes will likely depend on how well the show can maintain internal consistency and compelling character arcs within its new narrative framework.



## V. Rand's Character Development

The adaptation's treatment of Rand al'Thor, the central character of the book series, showcases significant changes that affect both his individual arc and the overall narrative structure.

### A. Discovery of channeling abilities

1. In the books:
  - Rand's ability to channel is initially hinted at through subtle events.
  - His first major channeling event occurs at the Eye of the World, guided by the Green Man.
  - Rand remains in denial about his abilities for an extended period.
2. In the show:
  - Rand's channeling is revealed more explicitly and earlier.
  - He has a vivid dream/memory of channeling during the Trolloc attack.
  - His abilities are confirmed when he channels to defeat Ishamael at the Eye of the World in Season 1.

### B. Accelerated acceptance of his role

1. The show fast-tracks Rand's acceptance of his identity as the Dragon Reborn.
2. This acceleration changes the pacing of his character development and internal struggles.

### C. Altered relationships and interactions

1. Rand's relationships with other characters, particularly Egwene and Moiraine, develop differently due to his earlier awareness of his powers.
2. The dynamic between Rand and other channelers is changed by the show's approach to revealing and developing magical abilities.

### D. Diminished central role in Season 2

1. Unlike the books, where Rand's journey remains central, the show reduces his prominence in major events.
2. This shift affects how the prophecies and expectations surrounding the Dragon Reborn are portrayed.

### E. Implications for future storylines

1. The accelerated discovery and acceptance of his powers may lead to different challenges for Rand in future seasons.
2. The show may need to create new conflicts or alter existing ones to maintain tension in Rand's storyline.
3. The balance between Rand's individual journey and the ensemble cast may continue to differ from the books.



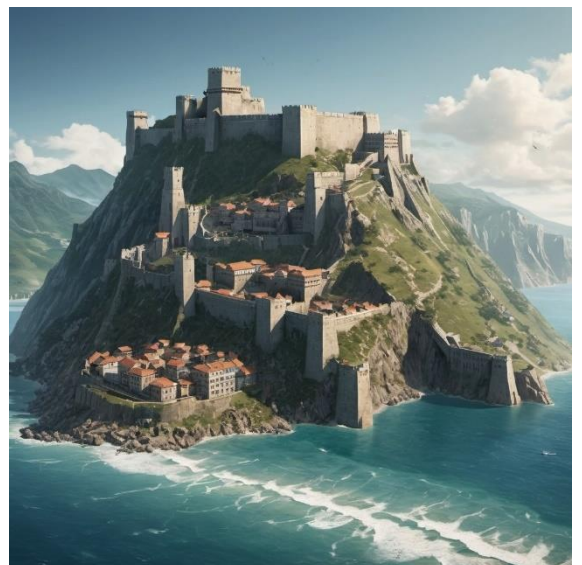
## F. Thematic changes

1. The books emphasize Rand's reluctance and the burden of his power, themes that are less prominent in the show's portrayal.
2. The show's approach may lead to different explorations of themes like destiny, power, and responsibility.

## G. Audience perception

1. The changes to Rand's character and role may alter how viewers connect with him as the protagonist.
2. The show's treatment of Rand could impact how the overall story is received, especially by book fans expecting him to be the clear central figure.

These alterations to Rand's character development represent a fundamental shift in how the story approaches its central character and the main plot device of the One Power. While these changes create more immediate drama and potentially make Rand's journey more accessible to a television audience, they also risk sacrificing some of the nuance and gradual character development present in the books. The long-term impact of these changes on the overall narrative and themes of "The Wheel of Time" remains to be seen as the series progresses.



## VI. Perrin's Altered Journey

The adaptation's treatment of Perrin Aybara represents one of the most significant departures from the source material, fundamentally changing his character arc and motivations.

### A. Introduction of a wife and trauma

1. In the show:
  - Perrin is given a wife, Laila, whom he accidentally kills during the Trolloc attack.
  - This event becomes the primary source of his internal conflict.
2. In the books:
  - Perrin is unmarried at the start of the story.
  - His internal struggles are more focused on his emerging abilities and their implications.
3. Impact:
  - This change adds immediate trauma and guilt to Perrin's character.
  - It arguably oversimplifies his internal struggles compared to the books.

### B. Diminished focus on wolf connection

1. In the show:
  - Perrin's connection to wolves is hinted at but not fully explored in the early seasons.
2. In the books:
  - His wolf abilities are a major part of his early character development.
3. Implications:
  - This diminishes a unique aspect of Perrin's character and his role in the group.
  - It may alter how his character develops in future seasons.

### C. Reduced emphasis on blacksmithing skills

1. The show gives less attention to Perrin's skill as a blacksmith.
2. In the books, his craftsmanship is central to his identity and later plot developments.
3. This change reduces a key aspect of Perrin's character that sets him apart.

### D. Changes in leadership development

1. Perrin's growth as a leader is less prominent in the show's early seasons.
2. This contrasts with the books, where his leadership qualities emerge early and develop significantly.
3. The change could affect his future role in the story and his relationships with other characters.

### E. Altered internal conflicts

1. In the show, Perrin's internal struggle centers around guilt over his wife's death.
2. The books focus on his struggle between violence and peace, human and wolf natures.
3. This simplification potentially makes Perrin's journey less nuanced.

## F. Mishandling of key characters and magical aspects

1. Elyas's introduction in Season 2:
  - While present, his role is significantly altered from the books.
  - The mentor-student relationship with Perrin is less pronounced.
  - His introduction is delayed, reducing his impact on Perrin's early development.
2. Conflation of characters and abilities:
  - The show mistakenly attributes the 'sniffer' ability to Elyas.
  - In the books, this is a separate character (Hurin) with a distinct magical ability.
  - This conflation oversimplifies the diverse magical talents in Jordan's world.
3. Implications of these changes:
  - Reduces the complexity of the magic system presented in the books.
  - Eliminates a unique character (Hurin) and his potential storylines.
  - Changes how Perrin learns about and comes to terms with his own abilities.
4. Broader impact:
  - Represents a trend of condensing or altering complex elements from the books.
  - Potentially limits future storylines that might have involved separate 'sniffer' characters.
  - Simplifies the rich tapestry of magical abilities in the original series.

## G. Impact on Perrin's character depth and uniqueness

1. The show's changes risk reducing the complexity of Perrin's character arc.
2. His unique role in the group dynamic may be diminished.
3. Future plot points involving Perrin may need significant alteration to accommodate these early changes.

These alterations to Perrin's character and journey represent a substantial deviation from the source material. While they create immediate drama and potentially make Perrin's struggles more relatable to a modern audience, they also risk simplifying a complex character arc. The long-term implications of these changes on Perrin's role in the larger narrative and his relationships with other characters remain to be seen as the series progresses.



## VII. Analysis of Adaptation Choices

The numerous changes made in adapting "The Wheel of Time" from book to screen reflect the challenges of translating a complex, multi-volume fantasy epic into a television series. This analysis will examine the implications of these adaptation choices:

### A. Streamlining for television audience

1. The show prioritizes immediate engagement over gradual world-building.
2. Complex elements are often simplified or combined to make the story more accessible.
3. This approach helps attract a wider audience but risks losing the depth that made the books compelling to many readers.

### B. Immediate dramatic impact vs. long-term character development

1. The show often opts for more immediate dramatic moments (e.g., Perrin's wife, Rand's early channeling).
2. While creating powerful television, this can come at the cost of nuanced, long-term character arcs.
3. The accelerated pacing may impact the overall journey of characters, particularly in their growth and self-discovery.

### C. Potential implications for future storylines

1. Significant early changes (e.g., to the Eye of the World, character roles) may necessitate further deviations from the source material.
2. The show may need to create new conflicts or alter existing ones to maintain tension and coherence.
3. These changes could lead to a substantially different overall narrative compared to the books.

### D. Shifts in thematic focus

1. The books' themes of destiny, responsibility, and the cyclical nature of time may be altered or less prominent in the show.
2. New themes more relevant to a contemporary audience might be introduced or emphasized.
3. The balance between individual journeys and ensemble storytelling differs from the books, potentially changing the overall message of the series.

### E. Balancing faithfulness and innovation

1. The show attempts to maintain core elements of the story while making significant changes.
2. This balance is challenging and may result in a product that satisfies neither purists nor those seeking a completely new interpretation.
3. The success of this approach will likely depend on the internal consistency of the show's world and narrative.

## F. Visual representation and its impact

1. The visualization of elements like channeling and diverse casting brings new dimensions to the story.
2. While engaging for viewers, these visual choices can sometimes limit the imagination in ways the books did not.

## G. Condensation of magical systems and world-building

1. The simplification of elements like the One Power and various magical abilities risks losing some of the richness of Jordan's world.
2. This may make the story more accessible but could limit the depth of the fantasy elements that set the books apart.

## H. Potential for long-form adaptation

1. Precedent for extended television series:
  - Other shows have successfully run for 15-20 seasons or more (e.g., "Grey's Anatomy," "Law & Order").
  - This demonstrates the potential for long-running series when they capture audience interest.
2. Faithfulness to source material in extended format:
  - A longer series could allow for a more faithful adaptation, preserving the books' pacing and depth.
  - This approach could better accommodate the extensive world-building and character development of the original series.
3. Financial considerations:
  - Initial success could justify continued investment in the series.
  - A dedicated fanbase could provide consistent viewership, supporting long-term production.
4. Streaming platform advantage:
  - Streaming services like Amazon Prime are less constrained by traditional TV scheduling.
  - This flexibility could allow for a more ambitious, long-term adaptation strategy.
5. Missed opportunities in condensation:
  - The current approach of significant condensation and alteration might be unnecessarily drastic.
  - A more gradual, faithful adaptation could potentially satisfy both new viewers and long-time fans.
6. Balancing act:
  - While a longer, more faithful adaptation is theoretically possible, it would require a delicate balance of maintaining audience engagement and managing production costs.
  - The show's creators may have felt pressure to make a more immediate impact in a competitive streaming landscape.

7. Risk assessment:

- Committing to a very long-term, faithful adaptation from the outset carries significant financial risk.
- The current approach might be seen as a way to establish the series before potentially expanding in future seasons.

In conclusion, the adaptation of "The Wheel of Time" demonstrates the inherent challenges in translating a beloved and complex book series to the screen. While the show makes efforts to capture the essence of Jordan's work, the numerous changes and simplifications result in a product that is, in many ways, fundamentally different from its source material. The long-term success of these adaptation choices will depend on how well the show can maintain narrative coherence, character depth, and audience engagement as it continues to navigate the balance between faithfulness to the books and the demands of television storytelling.



## References:

1. Jordan, R. (1990-2013). The Wheel of Time series (Books 1-14). Tor Books.
2. Jordan, R., & Sanderson, B. (2009-2013). The Wheel of Time series (Books 12-14). Tor Books.
3. Judkins, R. (Creator). (2021-present). The Wheel of Time [TV series]. Amazon Studios.
4. Jordan, R. (1990). The Eye of the World. Tor Books.
5. Jordan, R. (1990). The Great Hunt. Tor Books.
6. Jordan, R. (1991). The Dragon Reborn. Tor Books.
7. Judkins, R. (Executive Producer). (2021). The Wheel of Time: Season 1. Amazon Studios.
8. Judkins, R. (Executive Producer). (2022). The Wheel of Time: Season 2. Amazon Studios.
9. Jordan, R. (2004). New Spring. Tor Books.
10. Encyclopaedia-wot.org. (n.d.). The Wheel of Time Companion Website.
11. Dragonmount.com. (n.d.). Dragonmount: The Wheel of Time Community.
12. Theoryland.com. (n.d.). Theoryland: The Wheel of Time Theory Discussion.

